

Report to the Merton Clinical Commissioning Group Governing Body

Date of Meeting: 19th September 2013

Agenda No: 9.1

Attachment: 13

Title of Document: Chief Officer's Report	Purpose of Report: To receive and note
Report Author: Eleanor Brown, Chief Officer	Lead Director: Eleanor Brown, Chief Officer
Contact details: eleanor.brown2@nhs.net	
Executive Summary: This report provides an update on development of the MCCG and other initiatives in Merton.	
Key sections for particular note (paragraph/page), areas of concern etc. Whole Report	
Recommendation(s): The Clinical Commissioning Group Governing Board is requested to receive and note the report.	

Merton Clinical Commissioning Group Chief Officer's Report Thursday 19 September 2013

CCG DEVELOPMENT

As a new organisation, Merton CCG continues to evolve in our response to the functions required of us. The most recent organisational structure is attached for information. The Chief Finance Officer is now managing the Head of Performance and the Quality, Innovation, Productivity and Prevention (QIPP) Programme Lead. We are currently recruiting to the Head of Commissioning post which remained vacant until the Director of Commissioning & Planning had assessed the full functions of this post.

SERVICE DEVELOPMENT

Merton Better Healthcare Closer to Home (BHCH):

Nelson Local Care Centre

Governing Body members will be aware that the contract for the re-development of the Nelson site was signed in March 2013. This project has been a long time in gestation but we are now on the threshold of delivering a fantastic new building and most importantly a range of high quality clinical services designed to meet the needs of Merton residents.

Merton Clinical Commissioning Group, in partnership with South London Health Partnerships and Community Health Partnerships, will be working together over the next 18 months to ensure that the project is successfully delivered. Adam Doyle, Director of Commissioning & Planning, is the Senior Responsible Officer and we have appointed a team to manage the day-to-day delivery of the project. This team is lead by Sue Howson supported by Pam Coen (Clinical Commissioning), Christine Longmire (Project and Facilities Management) and Keith Foster (Information & Communications Technology). Dr Sion Gibby, Locality Clinical Lead for Raynes Park, will be the Clinical Lead for this project.

The old Nelson building has now been demolished, with the exception of the pavilions that are required to be retained, and work has commenced on building the new Local Care Centre.

Our focus is now on delivery and we are setting up a series of workstreams to take forward the project which is due for completion by March 2015.

Mitcham Local Care Centre

As part of Merton CCG's BHCH Programme, a Strategic Outline Business Case has been commissioned to establish the appropriate model of care for the residents of Mitcham and the surrounding locality. It is expected that this piece of work will be completed in early January and be reviewed by the BHCH Programme Management Board on 23 January 2014. As a key stakeholder, London Borough of Merton has supported this approach.

Patient and Public Involvement

The refreshed Merton Patient & Public Involvement Strategy is in draft form. Local organisations and individuals are being asked to comment on the strategy before it is brought to the Governing Body in November.

Merton Healthwatch was officially launched in July 2013 and I was very pleased to be invited to make a presentation. The Chair and I answered questions as part of a panel with the Director of Social Care & Housing, Simon Williams, Healthwatch UK Chief Executive, Dr Katharine Rake OBE, and Barbara Price, Merton Voluntary Service Council Trustee for Healthwatch. The Director of Quality was also in attendance at the event.

The following day Merton Healthwatch organised a very successful event for the Merton Integration Project which brought over 50 carers and users together to consider our work to date on a model of integration for Merton. One of the tasks for participants was what would 'brilliant care' look like from their point of view. We are using this and other feedback to support the development of the service integration and our commissioning intentions.

A CALL TO ACTION

Background

A Call to Action is an invitation by NHS England to engage patients, public and professionals to address the impact of a predicted shortfall of approximately £38 billion in the NHS in terms of service provision over the next ten years, and to ask those stakeholders to help identify change to achieve the resources required.

A Call to Action will have a number of specific areas for consideration; at present we have two:

- £38 billion gap – how do we achieve our share?
- Access to primary care – how do we improve access to primary care, given the strategic direction of travel that more care will be in a non-acute setting?

NHS England London are supporting the CCGs and co-ordinating a London-wide response. In Merton, the overall lead for A Call to Action is the Chief Officer, assisted by the Director of Commissioning and Planning and the Director of Quality.

We aim to ask stakeholders their views in relation to A Call to Action through existing channels and systems and use views to enrich and steer our commissioning intentions 2014-16 and our commissioning strategy to 2017. Merton CCG, Local Authority and Merton Healthwatch have identified the following activities to ensure we elicit the views of local residents and professionals in time to influence our commissioning business planning round autumn/winter 2013.

Meetings planned

- Health & Wellbeing Board – date to be agreed with Cllr Kirby
- Merton Healthwatch/PPI Engagement Event – 16 October 2013
- BSBV Consultation (subsequent to NHS England assurance)
- MCCG Members' Event – 9 October 2013
- Governing Body Seminar – 17 October 2013
- Merton Integrated Services Programme Board – date TBC

Primary care/general practice Call to Action

- MCCG Members' Event – 9 October 2013 and some further events TBA
- GP Leads Forum – November 2013
- Patient Participation Groups – November 2013

- Health & Wellbeing Board – date TBA (likely to be same as general call to action date)

Electronic communication

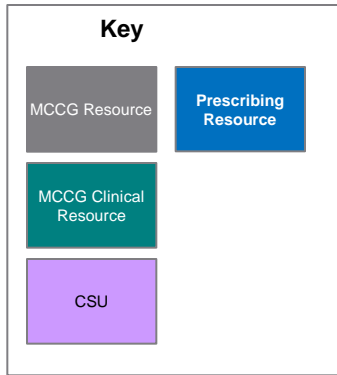
Ideas including engagement in online discussions:

- Merton i
- Merton CCG Twitter
- Intranet

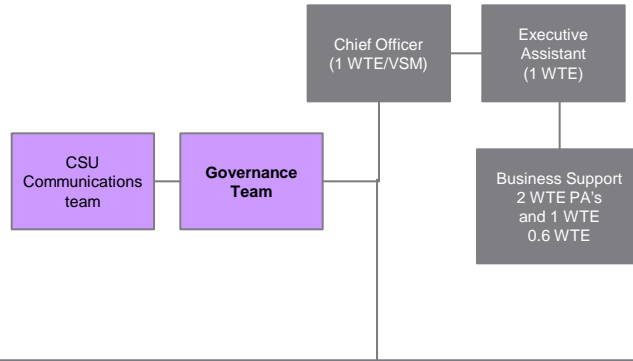
A pan-London Steering Group has been set up consisting of NHSE, Local Authority, Mayor's Office and CCGs, and I am a member. There is a series of pan-London events planned before December 2013 and national events between January and March 2014.

Chief Officer's report 19 Sept 2013/EB/dc

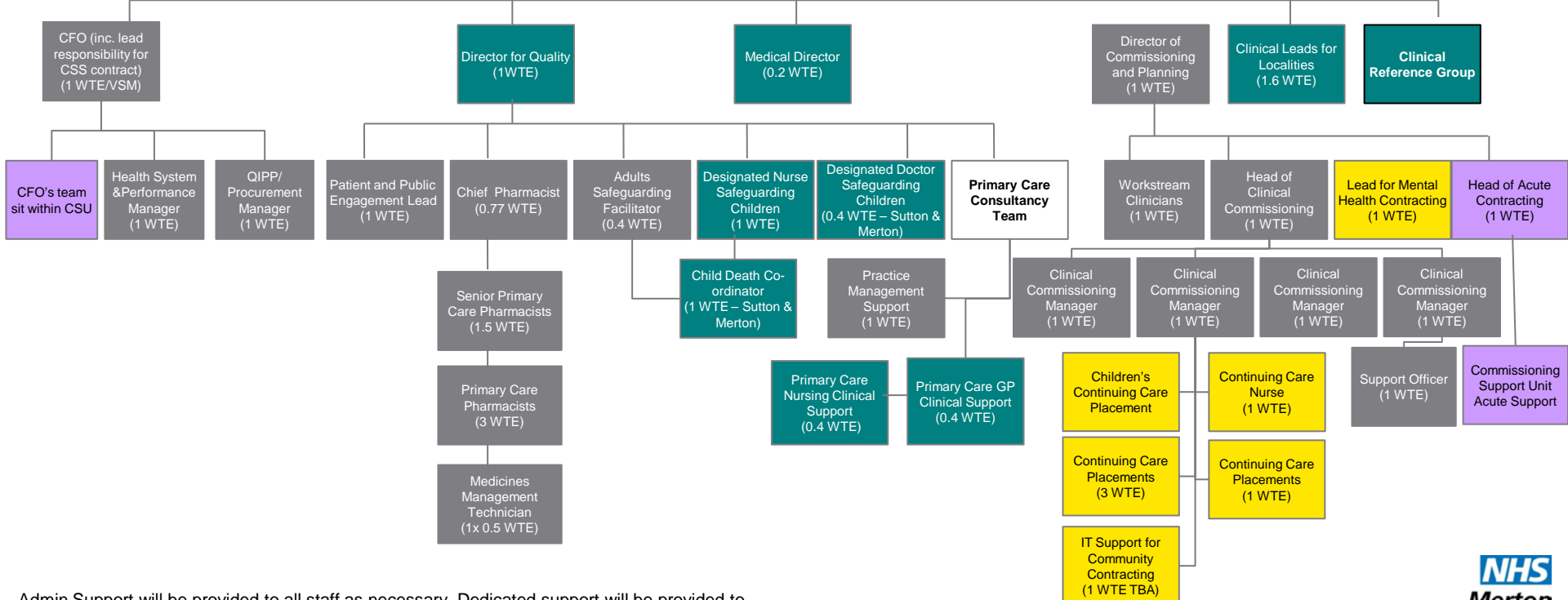
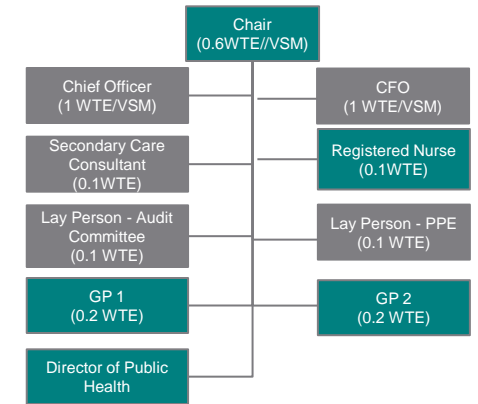
MCCG Org Structure – Including LA/CSS/CCG Shared Resources



MCCG Delivery Team

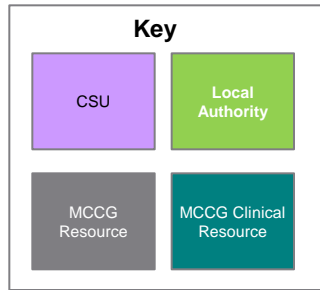


MCCG Board



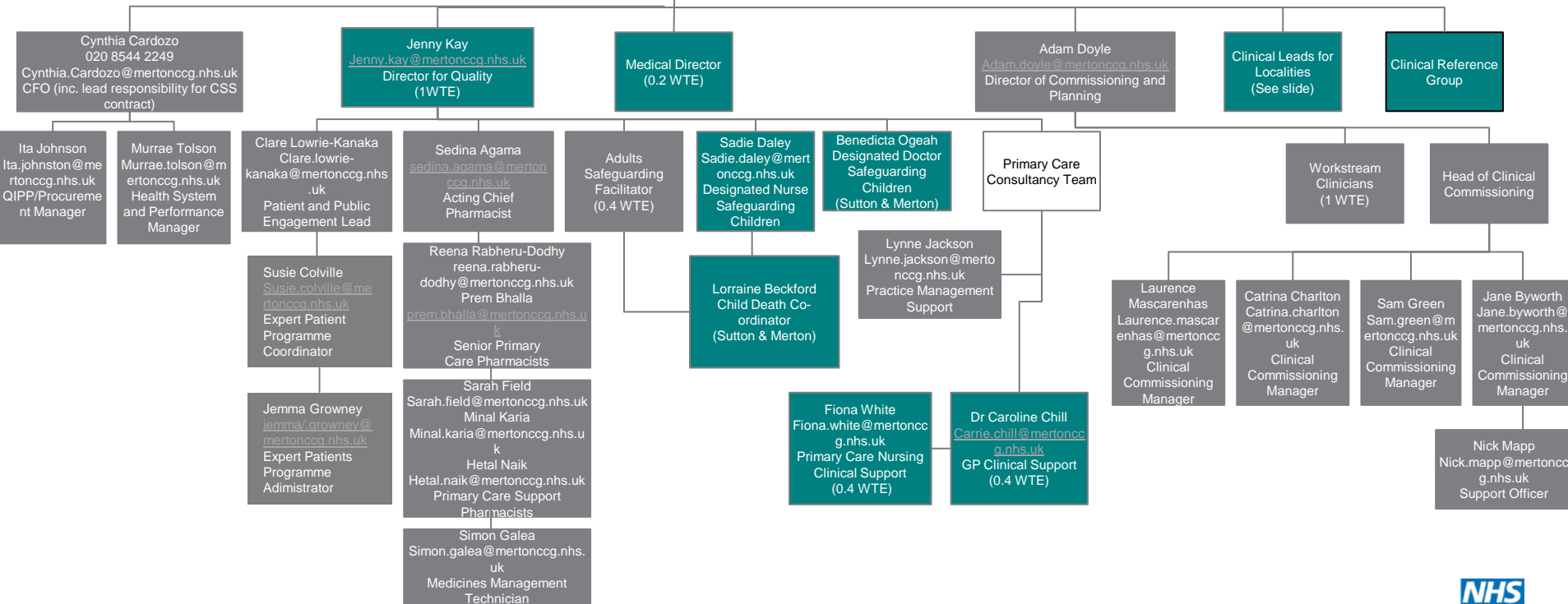
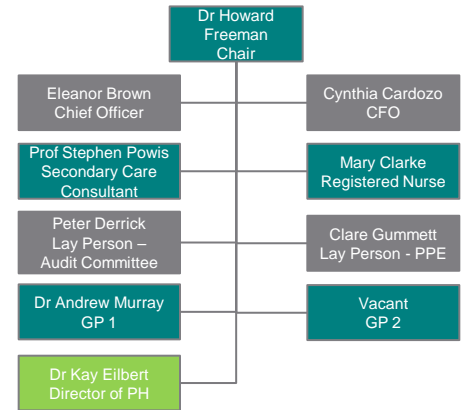
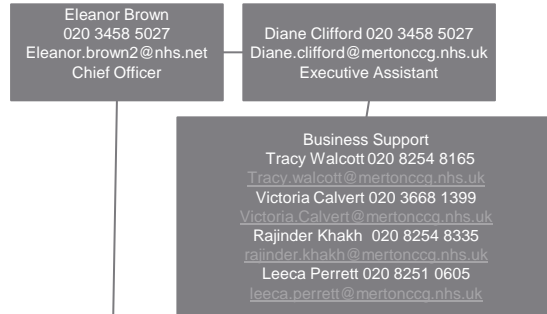
Admin Support will be provided to all staff as necessary. Dedicated support will be provided to senior staff including the Chief Officer, Chair, Director of Commissioning and Planning and Head of Clinical Commissioning.

MCCG Organisation Structure



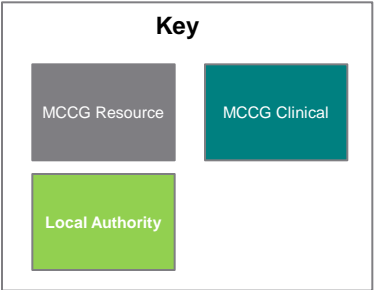
MCCG Delivery Team

MCCG Board

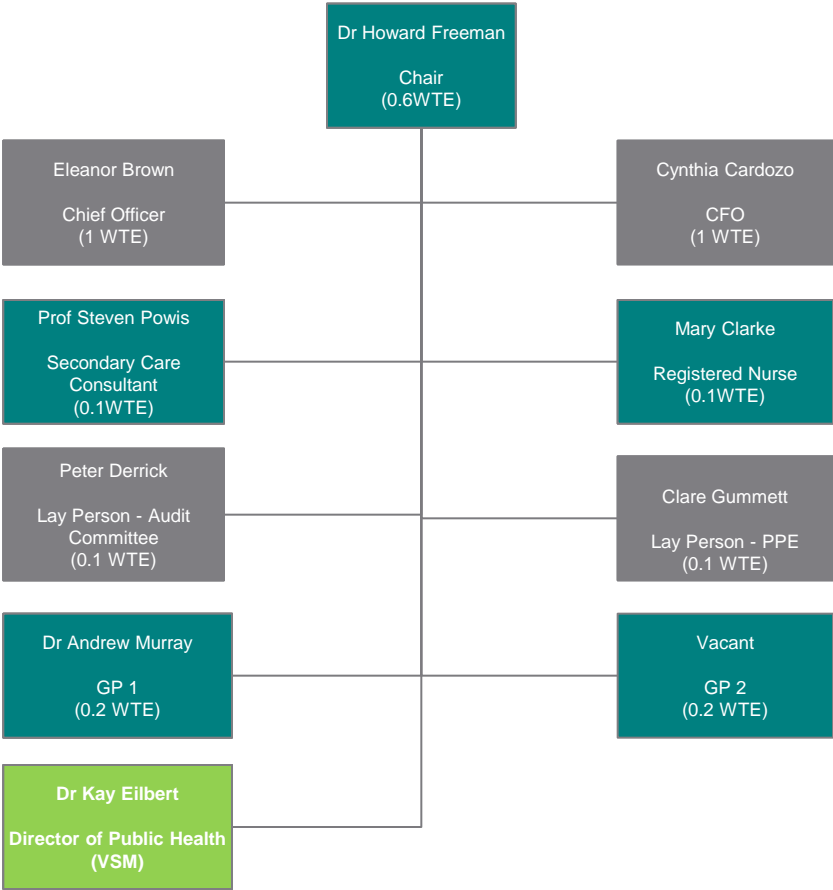


Admin Support will be provided to all staff as necessary. Dedicated support will be provided to senior staff including the Chief Officer, Chair, Director of Commissioning and Planning and Head of Clinical Commissioning.

MCCG Board Structure



MCCG Board



MCCG Org Structure (Clinicians) – Clinical Reference Group

